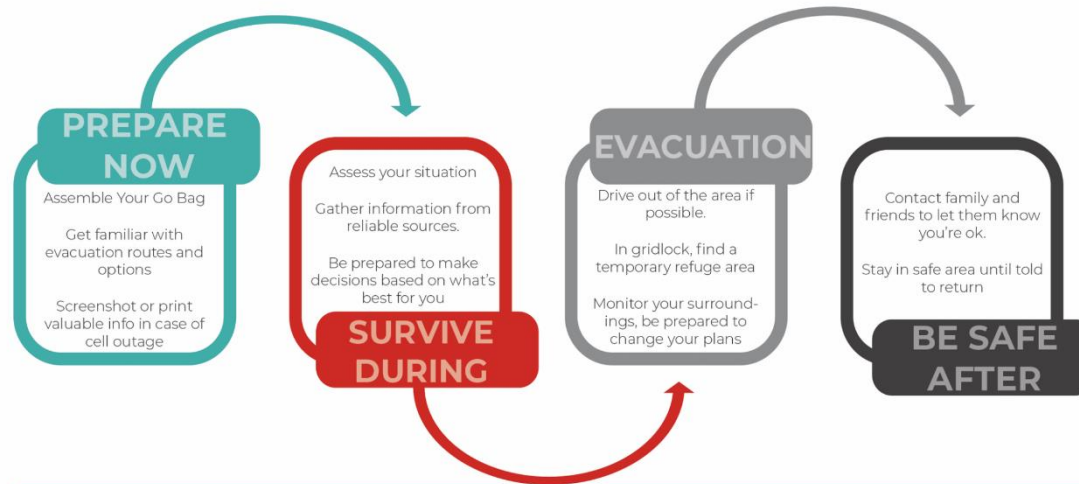




EMERGENCY EVACUATION PREPAREDNESS

Disaster can strike quickly and without warning. You may need to evacuate. Initially, government and relief resources are limited so you could be without help for hours. Keep the enclosed map and instructions in your go bag.



INFORMATION IS KEY

1. Local radio, television
2. Official government social media channels
3. For Emergency Alerts JOIN PREPARE to 30890 to get alerts via text, phone and email too.

IN AN EMERGENCY

The best thing you can do is make smart decisions based on what's happening at the time. Having a written plan coupled with good decisions will help keep you safe. -Chief Brian Uhler

EVACUATION OPTIONS

The City is exploring a number of different options in the event of a wildfire or other emergency.

- VEHICLE EVACUATION
- WATERSIDE EVACUATION
- PRIMARY REFUGE AREA
- SECONDARY REFUGE AREA

FOR MORE INFORMATION

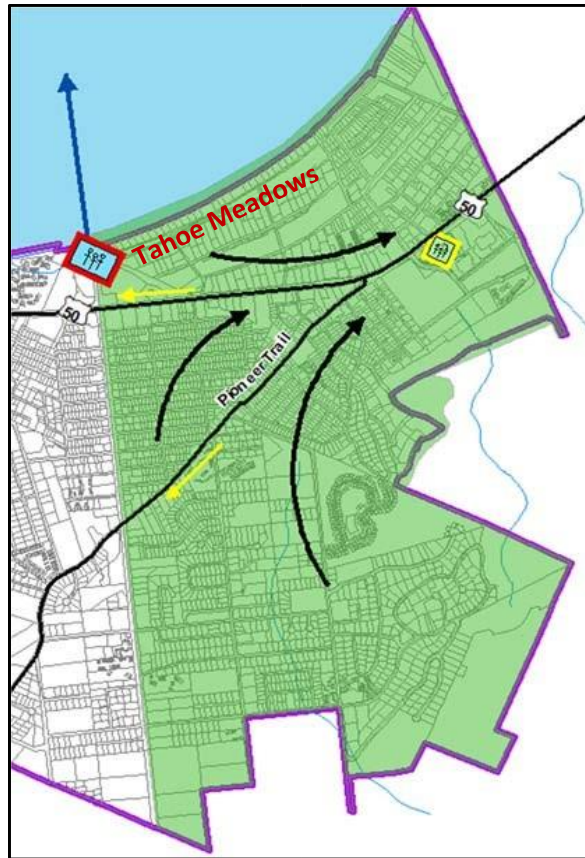
If you want to know more about how you can stay safe in the event of an emergency, including an interactive evacuation map, tips on being prepared, etc.

GO TO:
CITYOFSLT.US/PREPARE

EMERGENCY EVENTS ARE DYNAMIC – USE JUDGEMENT BASED ON WHAT YOU SEE!



Stateline/Tahoe Meadows/Heavenly Valley Evacuation Plan



Pre evacuation plan:

- (1) Have “go bag” ready—see: <https://ready.gov/build-a-kit>
- (2) Print maps and this plan and place in your vehicle and “go bag”
- (3) Prepare family/friends by letting them know your plan
- (4) Help neighborhood people who are disabled or have no car

Vehicle Evacuation

Primary: Eastbound on Highway 50 or Pioneer toward Carson City

Secondary: Westbound on Highway 50 or Pioneer Trail toward Sacramento

Vehicle evacuation safety points

- (1) continually monitor your surroundings
- (2) tune to FM 93.9 or AM 1490 radio for local updates
- (3) keep phone nearby for wireless emergency alerts (capable phones)
- (4) if stuck and situation worsens, be prepared to evade danger on foot
- (5) not enough fuel? go to temporary refuge area—Don’t block routes

Temporary Refuge

Primary: Ski Run Marina/Highway 50 and Ski Run Boulevard

Secondary: Village Center (Raley’s) Parking/Highway 50 and Park Avenue (or beyond to the casino parking areas if this area is impacted).

Temporary Refuge Information:

- (1) Not long-term shelter—bring essential supplies or “go” bag
- (2) Primary refuge areas could include boat evacuation option
- (3) Boat evacuation may occur before or after an event
- (4) Secondary refuge areas do not have water evacuation option
- (5) Temporary refuge areas are considered a “location of last resort”
- (6) Park vehicles away from refuge area and walk in if possible
- (7) These are easily identifiable areas which are more open and possibly paved so fire danger is reduced.

Legend	
Temporary Refuge Area	Evacuation Zones
Primary Refuge	Al Tahoe/Bijou
Secondary Refuge	Bijou/Pioneer Village
Evacuation Route	Sierra Tract/Highland Woods
Boat	State line/Heavenly Valley/Tahoe Meadows
Primary	Gardner Mountain/Tahoe Island
Secondary	Tahoe Keys
	Tahoe Valley